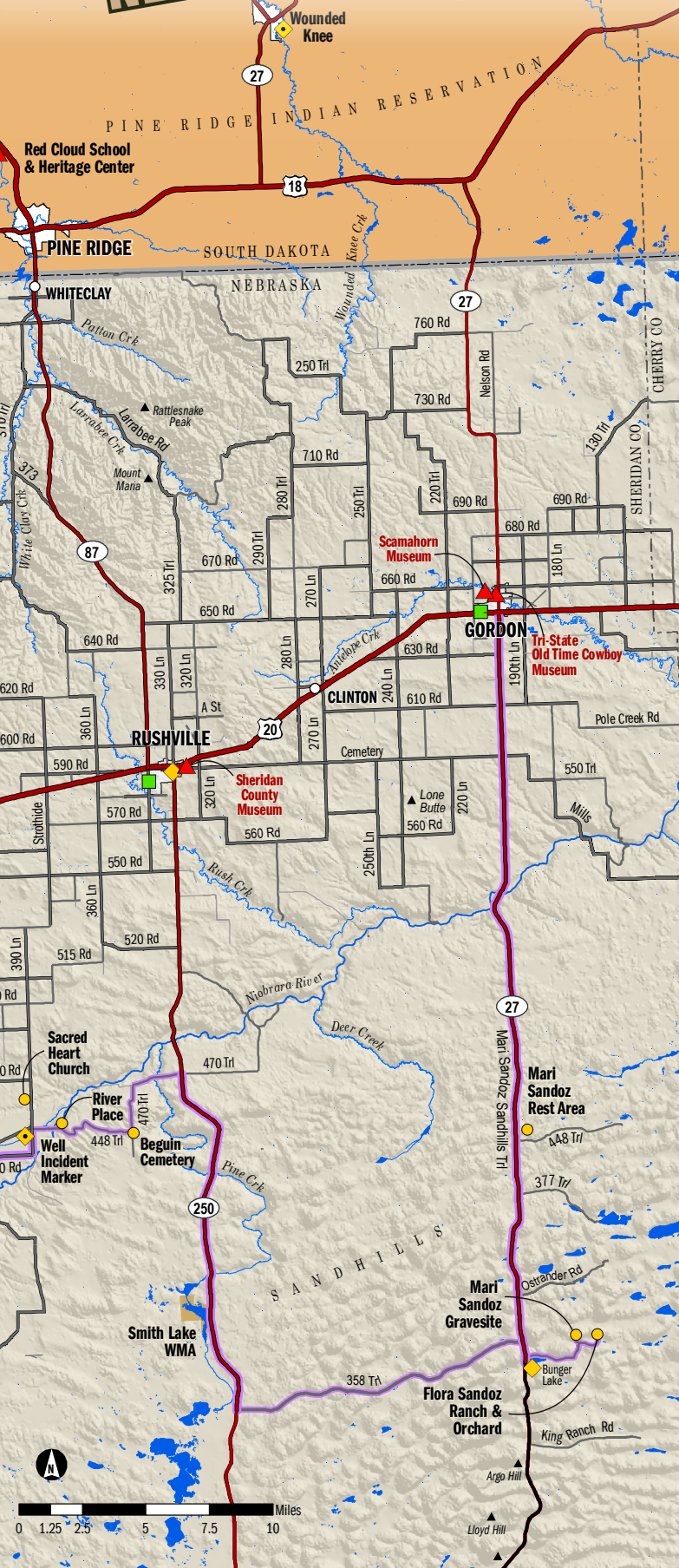


NGPC State Park	Golf Course
NGPC State Recreation Area	Historic Monument
NGPC Wildlife Management Area	Museum
U.S. Forest Service Land	Village (limited or no services)
U.S. Bureau of Reclamation Operations Area	Fishing
Major Roads and Highways	Church
Crazy Horse Memorial Highway	Hiking
	Boating
	Picnicking
	Campground
	Equestrian

0 5 Miles

DISCOVER NORTHWEST NEBRASKA



STATE PARKS: THE FIRST AND THE BIGGEST

Chadron State Park Established in 1921, Nebraska's first state park offers hiking and biking trails through beautiful pine-covered buttes and canyons. Chadron Creek and the park's pond highlight the attraction's array of attributes, which include diverse camping facilities, rental cabins, an indoor shooting complex, fishing, paddle boating, archery, horseback riding, sand volleyball court, tennis court, swimming pool, horseshoe pits, modern playground equipment, concessions and plenty of peace and quiet. Groups welcome. Nebraska park permit required. 308-432-6167.

Fort Robinson State Park At 22,000 acres, Nebraska's largest state park is situated among towering PineRidge landforms and two streams. Its many recreation opportunities include horseback riding, hiking and biking trails, indoor swimming pool, jeep and stagecoach rides, fishing ponds, and diverse lodging and camping. The drive-through loop offers viewing of the bison herd, longhorn cattle and bighorn sheep. The fort was originally established as a military post serving as headquarters for army troops stationed to guard Red Cloud Indian Agency. Nebraska park entry permit required. 308-665-2900.

PREHISTORIC WONDERS

Hudson-Meng Education and Research Center One of the most important archaeological sites on the Great Plains, the Hudson-Meng Bone Bed is possibly the largest Paleo-Indian-age bison kill site ever discovered. Ongoing research uses modern scientific techniques to interpret how so many bison died there in prehistoric times. Open Memorial Day through Labor Day. Small fee. 308-432-0300.

Toadstool Geologic Park From 24 to 38 million years ago this area was a braided river system home to now extinct wildlife. Following eons of flood deposits and volcanic ash blankets from farther west, erosion carved a badlands moonscape. Namesake "toadstools" and trackways of long-extinct animals can be viewed along the one-mile loop trail. Primitive campground and picnic area. Small fee. 308-432-0300.

Agate Fossil Beds National Monument An interpretative center features life-sized replicas of animals that roamed the area 20 million years ago. A modern visitors center features fossil and plant displays, interactive displays, walking trails, and a picnic area as well as a rare collection of Native American artifacts. Visitors center open 9 a.m. to 5 p.m. daily. Winter hours are 8 a.m. to 4 p.m. No fee. 308-665-4110.

Eleanor Barbour Cook Museum of Geology at Chadron State College The museum in the Math Science Center of Innovative Learning hosts an impressive collection of rocks, minerals, and fossils. Visitors can see rare agates, jade, and petrified wood. Call 308-432-6377 for information and times.

Trailside Museum at Fort Robinson A life-size display of the fossils of two ancient mammoths that died with tusks locked in combat is the highlight of this museum operated by the University of Nebraska at Lincoln. Other exhibits showcase a wealth of fossils, geology and Native American history. Open April through October. Small Fee. 308-665-2929.

THE GREAT OUTDOORS

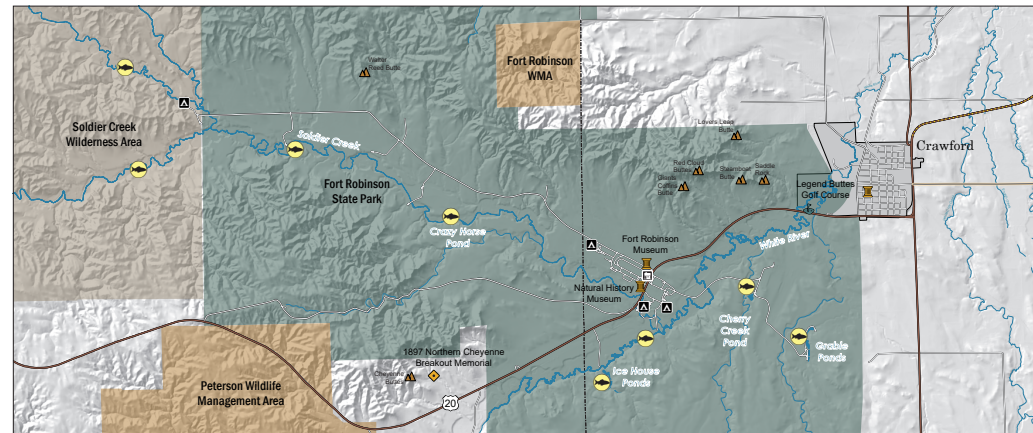
Ogala National Grassland One of 20 national grasslands managed by the U.S. Forest Service, this 94,000-acre area extends from near Chadron to South Dakota and Wyoming. Hunting, fishing, biking and sightseeing opportunities abound. Purchase a forest recreation map before you take this journey. Free Motor Vehicle Use Maps showing roads open for off-road motorized travel are available in print and on the Avenza app. 308-432-4475 or 308-432-0300.

Nebraska National Forest The 51,000-acre Pine Ridge Ranger District of the Nebraska National Forest has more than 80 miles of trails through the scenic ponderosa pine forest. Hunters, horseback riders, hikers, mountain bikers and anglers are among the many who enjoy the backcountry access. Motor Vehicle Use Maps showing roads open for off-road motorized travel are available in print and on the Avenza app. 308-432-0300 or 308-432-4475.

Soldier Creek Wilderness Area The federal wilderness area encompasses 7,794 acres and offers 10 miles of scenic trails for non-mechanized use. Visitors enjoy trout fishing in the south and middle forks of the creek and small ponds. Witness the natural revegetation from the Fort Robinson Fire of July 8, 1989. 308-432-4475 or 308-432-0300.

Pine Ridge National Recreation Area Explore 6,600 acres of scenic forests, hills

FORT ROBINSON STATE PARK



and rolling plains in an area designed to provide a primitive/semi-primitive recreational opportunity in a natural environment managed for non-motorized use. A portion of the 80-mile Pine Ridge Trail System crosses the area. Free for day use, small fee for camping. 308-432-4475 or 308-432-0300.

Box Butte State Recreation Area The 1,600-acre lake is among the western Nebraska's premier fishing destinations, offering opportunities for northern pike, walleye, trophy bluegills, largemouth bass and much more. The area features a two-lane boat ramp and modern camping amenities, including a showerhouse. Most of the area surrounding the lake is open to hunting.

Walgren Lake State Recreation Area Fish for bass, walleye and panfish in this quiet, 100-acre prairie lake at the edge of the Sandhills. Primitive camping is available in the shade of cottonwoods.

Wildlife Management Areas Northwest Nebraska is home to 10 Wildlife Management Areas managed by the Nebraska Game and Parks Commission to develop and restore habitat for native and migratory species to have a safe place to breed, rest and feed. The WMAs are open to the public for hunting, trapping and fishing, as well as for many other activities, such as hiking, bird watching, nature study, horseback riding, stargazing and primitive camping.

GOLF COURSES

Legend Buttes Golf Course The White River winds through this nine-hole public course just west of Crawford. Open year-round with clubhouse access April-September. Driving range, cart and club rentals, and instruction available. 308-665-2431.

Ridgeview Country Club This nine-hole public golf course is nestled in the rolling plains southwest of Chadron. The clubhouse features food and drink from the Back Nine Bar and Grill. Driving range, cart and club rentals, and instruction available. 308-432-4468.

MUSEUMS

Museum of the Fur Trade The internationally-recognized museum is dedicated to preserving the history of the fur trade — the first business in North America. Museum grounds include James Bordeaux's trading post used from 1837-76 and an heirloom Indian garden. The Museum Shop offers books, jewelry, and Indian art. Open May 1-Oct. 31. By appointment off-season. Admission fee. 308-432-3843.

Dawes County Historical Museum Collections illustrate Dawes County history through photos, quilts, clothing, furniture, genealogy records, an original log house and barn, a pioneer church, an 1890s schoolhouse and a caboose. Featured displays include antique toys and custom farm machinery. Open Memorial Day through September 30. No admission fee. 308-432-4999.

Crawford Historical Museum Once a rowdy town frequented by well-known Wild West figures, cowboys and soldiers from nearby Fort Robinson, Crawford is now a prime location for railroad fans to snap photos of mile-long trains on the busy freight and coal line that bisects the community. The museum has photos and objects from the town's storied past. 341 Second St. Open May through mid-October, Monday through Saturday 10 to 4.

Sioux County Historical Museum The museum includes a schoolhouse, post office, country store, telephone office and home and tells the story of Sioux County from settlement through the 20th-century. Open Memorial Day through Labor Day and during September by appointment. 308-668-2110.

Mari Sandoz High Plains Heritage Center The center showcases a collection of materials from famed author Mari Sandoz and includes revolving exhibits, many related to the culture and heritage of the High Plains. The center also houses the C.F. Coffee Gallery

Outdoor Recreation Site	Trailhead	Improved Campground	Primitive Campground	Picnic Area
Coffee Park	●	●	●	●
Toadstool Park	●	●	●	●
Hudson-Meng	●	●	●	●
Soldier Creek	●	●	●	●
Fort Robinson	●	●	●	●
West Ash	●	●	●	●
East Ash	●	●	●	●
Roberts Corral	●	●	●	●
Coffee Mill	●	●	●	●
Chadron State Park	●	●	●	●
Outriders	●	●	●	●
Strong Canyon	●	●	●	●
Spotted Tail	●	●	●	●
The Cliffs	●	●	●	●
Red Cloud	●	●	●	●
Agate Fossil Beds	●	●	●	●
Box Butte	●	●	●	●
Walgren Lake	●	●	●	●

and its exhibits about the rise of the High Plains cattle industry. Open year-round. Closed weekends and holidays. 308-432-6401.

Mari Sandoz Sites in Sheridan County The Pine Ridge and Sandhills country are the backdrop for many books by Sandoz, the acclaimed author of the early 20th century. The stories in the pioneer story Old Jules take place largely in this area of Sheridan County, where Mari's father, Jules Sandoz, established his homestead, gardens and orchards. Visitors can stop at the grave of Mari Sandoz, the Sandoz Orchard, the original homestead location, and the site of a well incident.

INDIANS & EARLY SETTLERS

In the latter half of the 19th century, northwestern Nebraska was the location of significant events in the conflict between Native Americans and the Euro-American settlers occupying the High Plains. Historic markers and monuments throughout the area commemorate some of those places and events.

Fort Robinson History Center The museum housed in the 1905 Post Headquarters has items from Fort Robinson's history. Interpretive displays, gift shop. Open from May to September. Small fee. 308-665-2919.

Site of Crazy Horse's Death at Fort Robinson Visit the site where famous Sioux leader, Crazy Horse, was killed while under arrest in 1877.

Red Cloud Indian Agency/Prisoner War Camp at Fort Robinson Site of Indian Agency established in 1874, housing thousands of Oglala Sioux, Northern Cheyenne and Arapaho during the pre-reservation era. A camp was built here in 1943 to house German World War II prisoners.

Council Tree Site The U.S. government tried to buy the Black Hills from the Lakota here in 1875.

Warbonnet-Yellow Hair Monuments Site of 1876 skirmish between the U.S. 5th Cavalry and Northern Cheyenne from Red Cloud Agency. First Army-Indian conflict after Little Bighorn battle.

Northern Cheyenne Breakout Monument Commemorates Northern Cheyenne's escape from imprisonment at Fort Robinson and loss of life during pursuit by soldiers in 1879.

Spotted Tail Agency and Camp Sheridan Named for Brule Sioux Chief Spotted Tail, the agency was built in 1874 to supply treaty payments. The army established Camp Sheridan nearby to protect the agency.

Wounded Knee Massacre Memorial The cemetery and site of the tragic 1890 confrontation that ended in the death of more than 200 Lakota men, women and children is located just north of the Nebraska border on the Pine Ridge Indian Reservation.

OTHER ATTRACTIONS

Post Playhouse The summer repertory theatre features musicals and comedies in a historic setting. Open late-May through mid-August. For more information on show times, ticket sales and performances call 308-665-1976.

Chadron Aquatics and Wellness Center Indoor lap pool featuring water slides and walking track. 540 E. 10th Street.

Chadron State College Chadron State College, a High Plains hub of higher education and culture, has grown to 3,000 students and over 50 majors since its founding in 1911. Modern amenities complement many historical buildings, five of which are listed on the National Register of Historic Places. The campus also features an extensive arboretum, a nature preserve and more than four miles of recreational trails. Audiences are frequently entertained by sporting events, concerts, plays, shows and speakers. In addition to other listed attractions, visitors may make appointments to see the campus planetarium and an extensive collection of wildlife taxidermy. 1-800-CHADRON.

Historic Downtown Chadron Visitors can learn about the history and architecture of this National Register downtown area by following the self-guided historic walking available at www.discovernwnebraska.com/historic-downtown-chadron

High Plains Herbarium Located in the Math and Science Building at Chadron State College, the High Plains Herbarium contains more than 60,000 specimens of plants, mostly from the northern Great Plains, and includes many ethno-botanical medicinal plants and historic pharmaceuticals. Open by appointment only. 308-432-6385.

For information about things to see and do, lodging and special events, call the Chadron Chamber and Visitors Center at 308-432-4401 or stop in at 706 West Third Street. www.DiscoverNWNebraska.com | www.chadron.com

