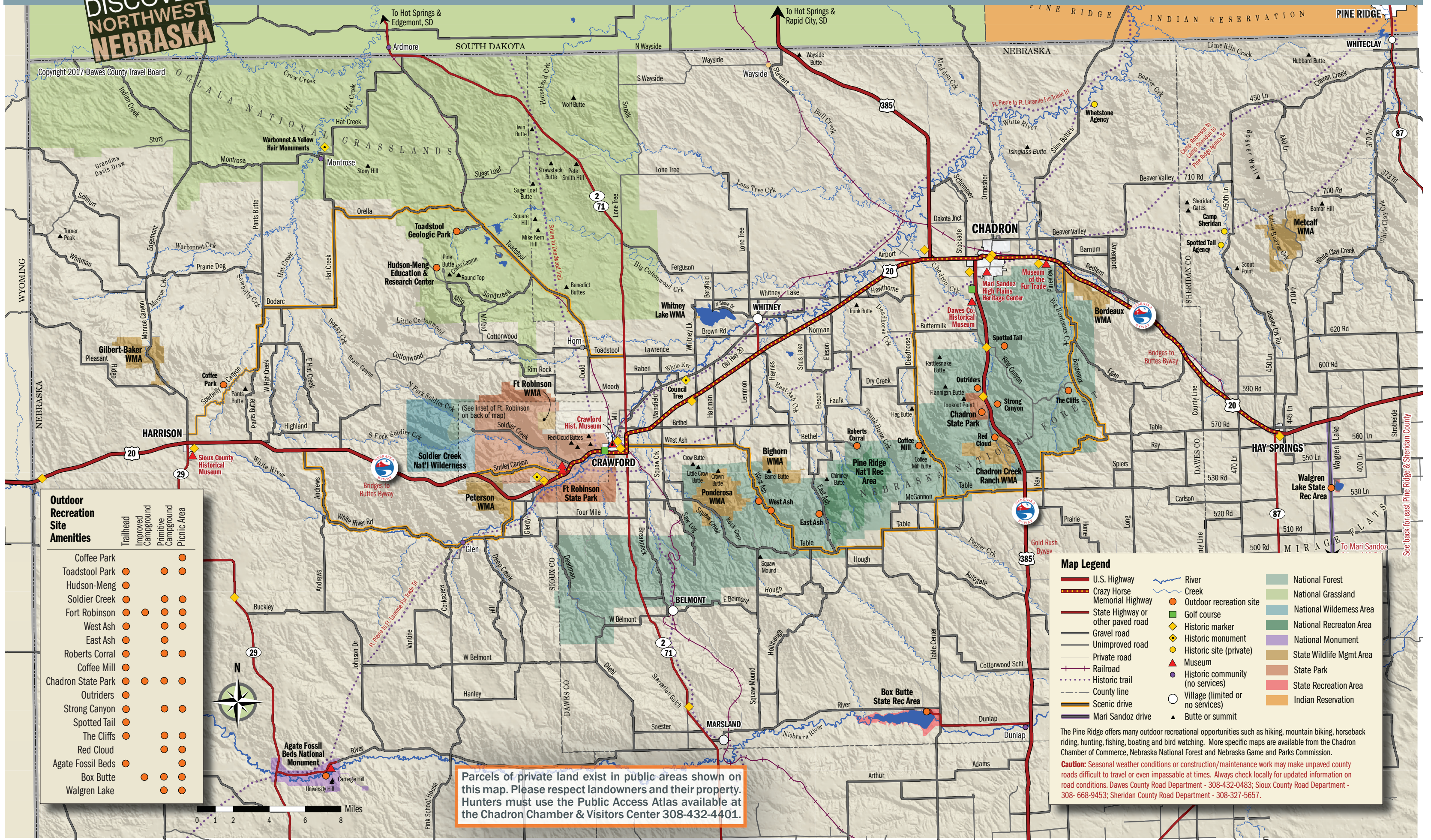


NORTHWEST NEBRASKA

DiscoverNWNebraska.com



Copyright 2017 Dawes County Travel Board



Outdoor Recreation Site Amenities

Site	Trailhead	Improved Campground	Primitive Campground	Picnic Area
Coffee Park	●	●	●	●
Toadstool Park	●	●	●	●
Hudson-Meng	●	●	●	●
Soldier Creek	●	●	●	●
Fort Robinson	●	●	●	●
West Ash	●	●	●	●
East Ash	●	●	●	●
Roberts Corral	●	●	●	●
Coffee Mill	●	●	●	●
Chadron State Park	●	●	●	●
Outriders	●	●	●	●
Strong Canyon	●	●	●	●
Spotted Tail	●	●	●	●
The Cliffs	●	●	●	●
Red Cloud	●	●	●	●
Agate Fossil Beds	●	●	●	●
Box Butte	●	●	●	●
Walgren Lake	●	●	●	●

Map Legend

- U.S. Highway
- Crazy Horse Memorial Highway
- State Highway or other paved road
- Gravel road
- Unimproved road
- Private road
- Railroad
- County line
- Scenic drive
- Mari Sandoz drive
- River
- Creek
- Outdoor recreation site
- Golf course
- Historic marker
- Historic monument
- Historic site (private)
- Museum
- Historic community (no services)
- Village (limited or no services)
- Butte or summit
- National Forest
- National Grassland
- National Wilderness Area
- National Recreation Area
- National Monument
- State Wildlife Mgmt Area
- State Park
- State Recreation Area
- Indian Reservation

Parcels of private land exist in public areas shown on this map. Please respect landowners and their property. Hunters must use the Public Access Atlas available at the Chadron Chamber & Visitors Center 308-432-4401.

The Pine Ridge offers many outdoor recreational opportunities such as hiking, mountain biking, horseback riding, hunting, fishing, boating and bird watching. More specific maps are available from the Chadron Chamber of Commerce, Nebraska National Forest and Nebraska Game and Parks Commission.
Caution: Seasonal weather conditions or construction/maintenance work may make unpaved county roads difficult to travel or even impassable at times. Always check locally for updated information on road conditions. Dawes County Road Department - 308-432-0483; Sioux County Road Department - 308-668-9453; Sheridan County Road Department - 308-327-5657.

See back for east Pine Ridge & Sheridan County

DISCOVER NORTHWEST NEBRASKA

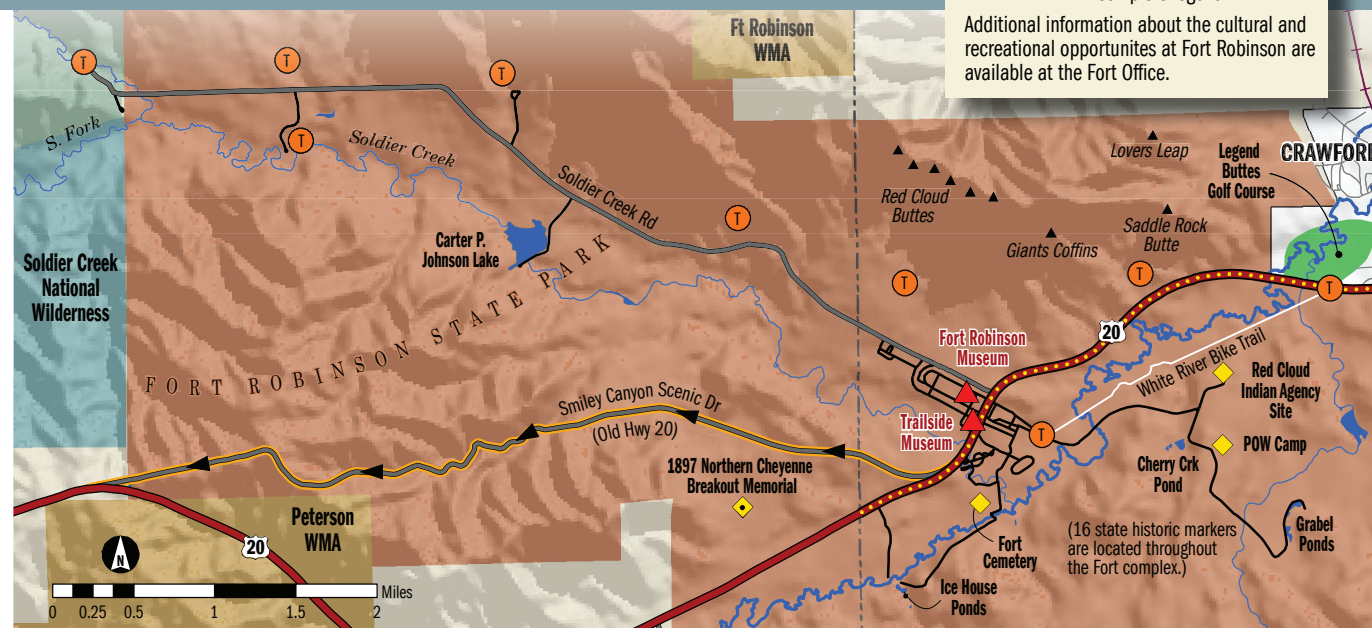
NORTHWEST NEBRASKA SHERIDAN COUNTY



FORT ROBINSON STATE PARK

Map Legend

- Trailhead See reverse side for complete legend
- Additional information about the cultural and recreational opportunities at Fort Robinson are available at the Fort Office.



PREHISTORIC WONDERS

Hudson-Meng Research and Education Center One of the most important archaeological sites anywhere on the Great Plains, the Hudson-Meng Bone Bed is possibly the largest PaleoIndian-age bison kill site ever discovered. Ongoing research at the site uses modern scientific techniques to decipher the mystery of how so many bison died there in prehistoric times. Open Memorial Day through Labor Day. Small fee. 308-432-0300.

www.fs.usda.gov/recarea/nebraska/recarea/?recid=10621

Toadstool Geologic Park Between 24 and 38 million years ago this area was a braided river system home to ancient wildlife. Following eons of flood deposits and volcanic ash blankets from farther west, erosion began to cut downward revealing a badland moonscape. Namesake "toadstools" and trackways of long extinct animals can be viewed along the one mile loop trail. A primitive campground and picnic area are located at trailhead. 308-432-0300.

www.fs.usda.gov/recarea/nebraska/recarea/?recid=10616

Agate Fossil Beds National Monument An interpretive center features life-sized replicas of animals which roamed this area 20 million years ago. A modern visitors center features fossil and plant displays, interactive computer programs, walking trails, and a picnic area as well as a rare collection of Native American artifacts given to pioneer rancher and scout James A. Cook by the Lakota Sioux Chief Red Cloud and his friends. Visitors center open 8 to 5 daily, with extended hours during the summer months. No fee. 308-665-4110. www.nps.gov/agfo/

Eleanor Barbour Cook Museum of Geology at Chadron State College Chadron State College hosts an impressive collection of rocks, minerals, and fossils from Nebraska and around the world. Visitors can see rare agates, jade, and petrified wood. Call 308-432-6377 for information and times. www.csc.edu/sci/ebcmuseum/

Trailside Museum at Fort Robinson A life-size display of the fossils of two ancient mammoths who died with their tusks locked in combat is the highlight of this museum operated by the University of Nebraska at Lincoln. Other exhibits showcase a wealth of fossils, geology and Native American history. Open Memorial Day through Labor Day. Small fee. 308-665-2929.

www.trailside.unl.edu

INDIANS & EARLY SETTLERS

FORT ROBINSON STATE PARK

This 22,000-acre state park (Nebraska's largest) offers excellent recreation opportunities including hiking and biking trails, horseback riding, indoor swimming pool, jeep and stagecoach rides, fishing, cabins and camping. The drive-through loop offers viewing of the bison herd, longhorn cattle and bighorn sheep. The fort was originally established as a military post serving as headquarters for army troops stationed to guard Red Cloud Indian Agency. Nebraska park permit required. 308-665-2900. www.outdoornebraska.gov/fortrobinson

Post Playhouse The Playhouse, a summer repertory theatre, features musicals and comedies in a historic setting. Open late-May through mid-August. For more information on show times, ticket sales and performances call 308-665-1976. www.postplayhouse.com

Fort Robinson Museum History comes alive in the museum (1905 Post Headquarters) with original items from Fort Robinson's famous history. Interpretive displays, gift shop. Open from May to Sept. Small fee. 308-665-2919. www.nebraskahistory.org/sites/fortrob/

Site of Crazy Horse's Death Visit the site where famous Sioux military leader, Crazy Horse, was killed by a soldier while placed under arrest in 1877.

Red Cloud Indian Agency/Prisoner War Camp Site of Indian Agency established in 1874, housing thousands of Oglala Sioux, Northern Cheyenne and Arapaho during the pre-reservation era. A camp was built here in 1943 to house German World War II prisoners. Interpretive signs tell the history of the site.

OTHER SIGNIFICANT SITES

In the latter half of the 19th-century, Northwest Nebraska was the location of a number of significant events in the long running conflict between Native Americans and the European settlers who were moving in to occupy the High Plains region. Historic markers and monuments located throughout the area commemorate some of those places and events.

Council Tree Site where the U.S. government tried to buy the Black Hills from the Lakota in 1875.

Warbonnet-Yellow Hair Monuments Site of 1876 skirmish

between the U.S. 5th Cavalry and Northern Cheyenne from Red Cloud Agency. First Army-Indian conflict after Little Bighorn battle.

Memorial to 1879 Northern Cheyenne Breakout Commemorates the flight of Northern Cheyenne's escape from imprisonment at Fort Robinson and loss of life during pursuit by soldiers.

Spotted Tail Agency and Camp Sheridan Named for Brule Sioux Chief Spotted Tail, the agency was built in 1874 to supply treaty payments. The army established Camp Sheridan nearby to protect the agency.

Wounded Knee Massacre Memorial [SD] The cemetery and site of the tragic 1890 confrontation that ended in the death of more than 200 Lakota men, women and children is located just north of the Nebraska border on the Pine Ridge Indian Reservation.

HISTORIC DOWNTOWN CHADRON

Visitors can learn about the history and architecture of this National Register downtown area by picking up a self-guided historic walking tour pamphlet at the Chamber Visitors Information Center, 706 W. Third Street. www.discovernwnebraska.com/historic-downtown-chadron

MUSEUMS

Museum of the Fur Trade The internationally-recognized museum is dedicated to preserving the history of the fur trade—the first business in North America. Museum grounds include James Bordeaux's trading post used from 1837-76 and an heirloom Indian garden. The Museum Shop offers books, jewelry, and Indian art. Open May 1 through October 31. By appointment off-season. Admission fee. 308-432-3843. www.furtrade.org

Dawes County Historical Museum Unique collections illustrate Dawes County history through photos, quilts, clothing, furniture, genealogy records, an original log house and barn, a pioneer church, an 1890s schoolhouse and a caboose. The Heesacker antique toy collection is not to be missed. Open Memorial Day through September 30th. No admission fee. 308-432-4999. www.discovernwnebraska.com/museums-and-markers

Crawford Historical Museum Once a rowdy town frequented by well-known Wild West figures, cowboys and soldiers from nearby Fort Robinson, Crawford is now a prime location for railroad fans to snap photos of mile-

long trains on the busy freight and coal line that bisects the community. The museum has photos and objects from the town's storied past. 341 Second St. Open May through mid-October, Monday through Saturday 10 to 4. www.crawfordmuseum.org

Sioux County Historical Museum The museum includes a schoolhouse, post office, country store, telephone office and home and tells the story of Sioux County from settlement through the 20th-century. Open Memorial Day through Labor Day and during September by appointment. 308-668-2110. www.discovernwnebraska.com/museums-and-markers

Mari Sandoz High Plains Heritage Center The center showcases a collection of materials from famed Nebraska author Mari Sandoz, and includes revolving historic and scientific exhibits, many related to the culture and heritage of the High Plains. The center also incorporates the C.F. Coffee Gallery with interpretive exhibits exploring the development of the cattle industry on the High Plains. Open year-round. Closed Sundays and holidays. 308-432-6401. www.sandozcenter.com

Mari Sandoz Sites in Sheridan County The Pine Ridge and Sandhills country of Northwest Nebraska formed the backdrop for many of the books by Mari Sandoz, one of Nebraska's best-known authors. The stories in the classic western pioneer story "Old Jules" take place largely in this area of Sheridan County, where Mari's father, Jules Sandoz, established his homestead, gardens and orchards. Visitors can stop at the grave of Mari Sandoz, the Sandoz Orchard, the original homestead location, and the well incident site.

THE GREAT OUTDOORS

Ogjala National Grassland One of 20 national grasslands managed by the U.S. Forest Service, this 94,000-acre area extends from near Chadron to South Dakota and Wyoming. Hunting, fishing, biking and sight-seeing opportunities abound, but be aware that parcels of private land are found in this area. Purchase a forest recreation map before you take this journey "off the beaten path." Free Motor Vehicle Use Maps showing roads open for off-road motorized travel are available. 308-432-4475 or 308-432-0300. www.fs.usda.gov

Nebraska National Forest The 51,000-acre Pine Ridge Ranger District of the Nebraska National Forest is public land managed to provide a variety of recreational uses as well as livestock grazing and limited timber production. Over 80 miles of trails through the scenic ponderosa pine forest offer hunters, hikers, mountain bikers and horseback riders nearly unlimited access to the backcountry. Private lands are intermingled with the national forest. Forest maps are available from Forest Service offices. Free Motor Vehicle Use Maps showing roads open for off-road motorized travel are available. 308-432-0300 or 308-432-4475. www.fs.usda.gov

Soldier Creek Wilderness Area This historic area served as horse and mule pasture and wood reserve area for troops stationed at Fort Robinson. This federal wilderness area encompasses 7,794 acres and offers 10 miles of scenic trails for non-mechanized use. Witness the natural revegetation from the Fort Robinson Fire of July 8, 1989. 308-432-4475 or 308-432-0300. www.fs.usda.gov

Chadron State Park Nebraska's first state park offers miles of hiking and biking trails through beautiful pine covered hills, camping and RV facilities, rental cabins, fishing, paddle boating, archery, horseback riding, jeep tours, sand volleyball court, tennis court, swimming pool, trading post and plenty of peace and quiet for everyone. Groups welcome. Nebraska park permit required. 308-432-6167. www.outdoornebraska.gov/chadron

Pine Ridge National Recreation Area Explore 6,600-acres of scenic forests, hills and rolling plains in an area designed to provide a primitive/semi-primitive recreational opportunity in a natural environment managed for non-motorized use. A portion of the 80-mile Pine Ridge Trail System crosses the area which is home to white-tail and mule deer, wild turkeys, mountain lions and golden eagles. Free for day use, small fee for camping from mid-May through mid-November. 308-432-4475 or 308-432-0300. www.fs.usda.gov

Box Butte State Recreation Area This popular area contains 212 acres available for hunting, fishing, camping and boating. Home to bluegill, channel catfish, crappie, largemouth and smallmouth bass, pike, walleye, and yellow perch. 308-665-2903. www.outdoornebraska.gov/boxbutte

Walgren Lake State Recreation Area Fish for bass, crappie, walleye and other panfish in this quiet, 100-acre prairie lake. Primitive camping is available and the fishing pier is wheelchair accessible. outdoornebraska.gov/walgrenlake

WILDLIFE MANAGEMENT AREAS (WMA)

Northwest Nebraska is home to a number of Wildlife Management Areas - lands managed by the Wildlife Division of the Nebraska Game and Parks Commission for public access for hunting, fishing and recreational use. The lands are supported by funds from the sale of Nebraska hunting and fishing permits, and federal funds from an excise tax on outdoor equipment. Access to these lands is free, and no entry permit is necessary. To protect the areas and their many assets, however, certain regulations apply to public use of all of the areas, with specific rules for some areas. www.outdoornebraska.gov

GOLF COURSES

Legend Buttes Golf Course The White River winds through this nine-hole public golf course located just outside of Crawford. Open year-round with clubhouse access April - September. Driving range, cart and club rentals, instruction available. 308-665-2431.

Ridgeview Country Club This nine-hole public golf course is nestled in the rolling plains southwest of Chadron, and is the home to the annual Don Beebe Golf Classic Memorial Weekend. Driving range, cart and club rentals, instruction available. 308-432-4468.

OTHER ATTRACTIONS

Chadron State College Chadron State College, a High Plains hub of higher education and culture, has grown to 3,000 students and over 50 majors since its founding in 1911. Modern amenities and new construction complement many historical buildings, five of which are listed on the National Register of Historic Places. The campus also features an extensive arboretum, a nature preserve and more than four miles of recreational trails. Audiences are frequently entertained by sporting events, concerts, plays, shows and speakers. In addition to other listed attractions, visitors may make appointments to see the campus planetarium and an extensive collection of wildlife taxidermy. 1-800-CHADRON or www.csc.edu

High Plains Herbarium Located in the Math and Science Building at Chadron State College, the High Plains Herbarium contains more than 60,000 specimens of plants, mostly from the northern Great Plains, and includes many ethno-botanical medicinal plants and historic pharmaceuticals. Open by appointment only. 308-432-6385.

QUESTIONS?

For information about things to see and do, lodging and special events, call the Chadron Chamber and Visitors Center at 308-432-4401 or stop in and visit at 706 West Third St., Chadron.

www.DiscoverNWNebraska.com | www.chadron.com

